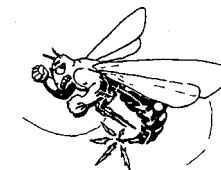


# Emory & Henry College

## 2005-2006 Women's Basketball Quick Facts



NCAA Division III Affiliation • Charter Member of the Old Dominion Athletic Conference

### Emory & Henry College

Founded ..... 1836  
 Enrollment ..... 1,000  
 Religious Affiliation ..... United Methodist  
 Conference ..... Old Dominion Athletic Conference (ODAC)  
 Athletic Affiliation ..... NCAA Division III, South Region  
 Nickname ..... *Wasps*  
 Colors ..... Blue & Gold  
 Gymnasium (Cap.) ..... King Center (1,350)  
 President ..... Dr. Thomas R. Morris  
 Athletic Director ..... Dr. J.P. Barfield

### Basketball Coaches

**Head Coach** ..... Joy Scruggs (Univ. of Tenn., '75)  
 Career Coaching Record ..... (348-254), 57.8%, 24 seasons  
 Coaching Record at E&H ..... (348-254), 57.8%, 24 seasons  
 Career ODAC Record ..... (261-144), 64.4%, 23 seasons  
 Office Phone ..... 276-944-6238  
 Home Phone ..... 276-944-3722  
**Asst. Coach** ..... Lindsey Schaaff (Wooster, '04)  
 Office Phone ..... 276-944-6674

### Sports Information

Sports Information Director ..... Nathan Graybeal  
 Office Phone ..... (276) 944-6830  
 Home Phone ..... (276) 944-3164  
 Fax ..... (276) 944-3673  
 Radio Phone Lines ..... (276) 944-6833, 6834 and 6175  
 Sports Information Web Site ..... [www.ehcsports.com](http://www.ehcsports.com)  
 E-Mail Address ..... [ngraybea@ehc.edu](mailto:ngraybea@ehc.edu)  
 Hotline ..... (540) 944-4121 press "11"

### Women's Basketball Quick Facts

2004-2005 Overall Record ..... (16-11)  
 2004-2005 ODAC Record ..... (12-8, 4th of 11)  
 Starters {Returning / Lost} ..... 4/1  
 Lettermen {Returning / Lost} ..... 8/7  
 ODAC Championships ..... 1984 Reg. Season; 1988 Tourn.

### Key Returnees

*Brooke Barker*, 5'7", SR, Guard (12.7 ppg, 5.3 rpg)  
*Kate Childress*, 5'8", SR, Guard (12.7 ppg, 6.1 rpg, 3.8 apg)  
*Kat Brandt*, 6'0", SO, Forward (6.3 ppg, 5.4 rpg)  
*Whitney Henderson*, 5'9", SR, Forward (4.0 ppg, 4.1 rpg)

### 2004-2005 Stat Leaders

*Scoring Average* ..... *Brooke Barker\** ..... 12.7  
*FG Percentage* ..... *Lauren Birdsell* ..... 57.8%  
*Rebounding* ..... *Kate Childress\** ..... 6.1  
*Assists* ..... *Kate Childress\** ..... 3.8  
*Steals* ..... *Kate Childress\** ..... 2.0  
 \*denotes returning player

### Athletic Personnel

Athletic Administrative Asst. .... Dana Gentry Boyd  
 Athletic Training Prog. Dir. .... Dennis "DC" Cobler  
 Baseball Head Coach ..... Trey McCall  
 Basketball Coach, Men's ..... Bob Johnson  
 Basketball Asst. Coach, Men's ..... Jamion Christian  
 Basketball Coach, Women's ..... Joy Scruggs  
 Basketball Asst. Coach, Women's ..... Lindsey Schaaff  
 Cross Country Coach, Men's ..... John Iskra  
 Cross Country Coach, Women's ..... John Iskra  
 Golf Coach, Men's ..... Mark Martin  
 Soccer Coach, Men's ..... Craig Appleby  
 Soccer Coach, Women's ..... Jimi Meyer  
 Softball Coach ..... Shannon Farley  
 Swimming Coach, Women's ..... Jim Barker  
 Tennis Coach, Men's ..... Jim Barker  
 Tennis Coach, Women's ..... Beverly Hatch  
 Volleyball Coach ..... Cassie Pochyla